

People Professional



The Arker Group Ltd[®]
People, Health & Safety Solutions

This apprenticeship is delivered in partnership with The Arker Group Ltd.

Sector	Relevant to all employment sectors
Who is it for?	New recruits and existing staff
Start date	Flexible to suit employers
Level	5
Duration	18–22 months plus three months for end-point assessment
Qualification	Level 5 Associate Diploma in People Management
Delivery model	Hybrid delivery is applied to the course, incorporating a combination of face-to-face sessions, remote learning, independent home study, and live online sessions

People Professionals operate in organisations of any size and sector. In smaller businesses, the role may have a broader remit. They support organisational objectives through the people agenda, providing advice, guidance and challenge across a wide range of people activities.

Responsibilities may include workforce planning and recruitment, talent development and retention, employee relations and well-being, payroll and benefits support, performance management, ensuring compliance with employment law, contributing to people policies and processes, using people data to inform decisions and drive improvement.

Typical job roles include:

People consultant

People business partner

Employee relations consultant

Diversity and inclusion manager

People generalist

People manager

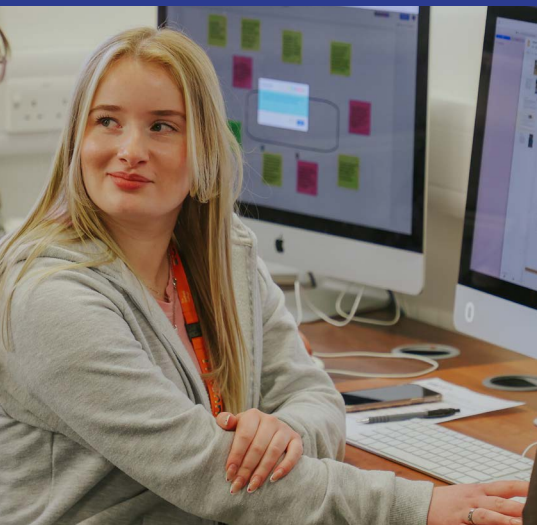
Talent manager

What your Apprentice will learn



Apprentices develop their ongoing knowledge, skills and behaviours to be able to work effectively in their job role.

These form the apprenticeship standards which have been developed and agreed with employers.



100%

pass rate at end-point assessment
in 23/24 and 24/25 for this standard

The knowledge, skills and behaviours that your Apprentice will learn include:

Knowledge

Analytics and creating value

Evidence based practice

Business acumen

Commercial drive

Culture and behaviour

Digital working

People practice

Skills

Analytics and creating value

Evidence-based practice

Business acumen

Digital working

People practice

Behaviours

Professionalism and integrity

Collaboration




Resilience and adaptability

Inclusivity and ethical practice

Commitment to wellbeing and continuous development

Get in touch

apprenticeshipsandtraining@sheffcol.ac.uk
0114 260 2600

 Apprenticeships+
 The Sheffield College
 Sheffcolappsplus

Scan me
to view this
standard in
more detail

